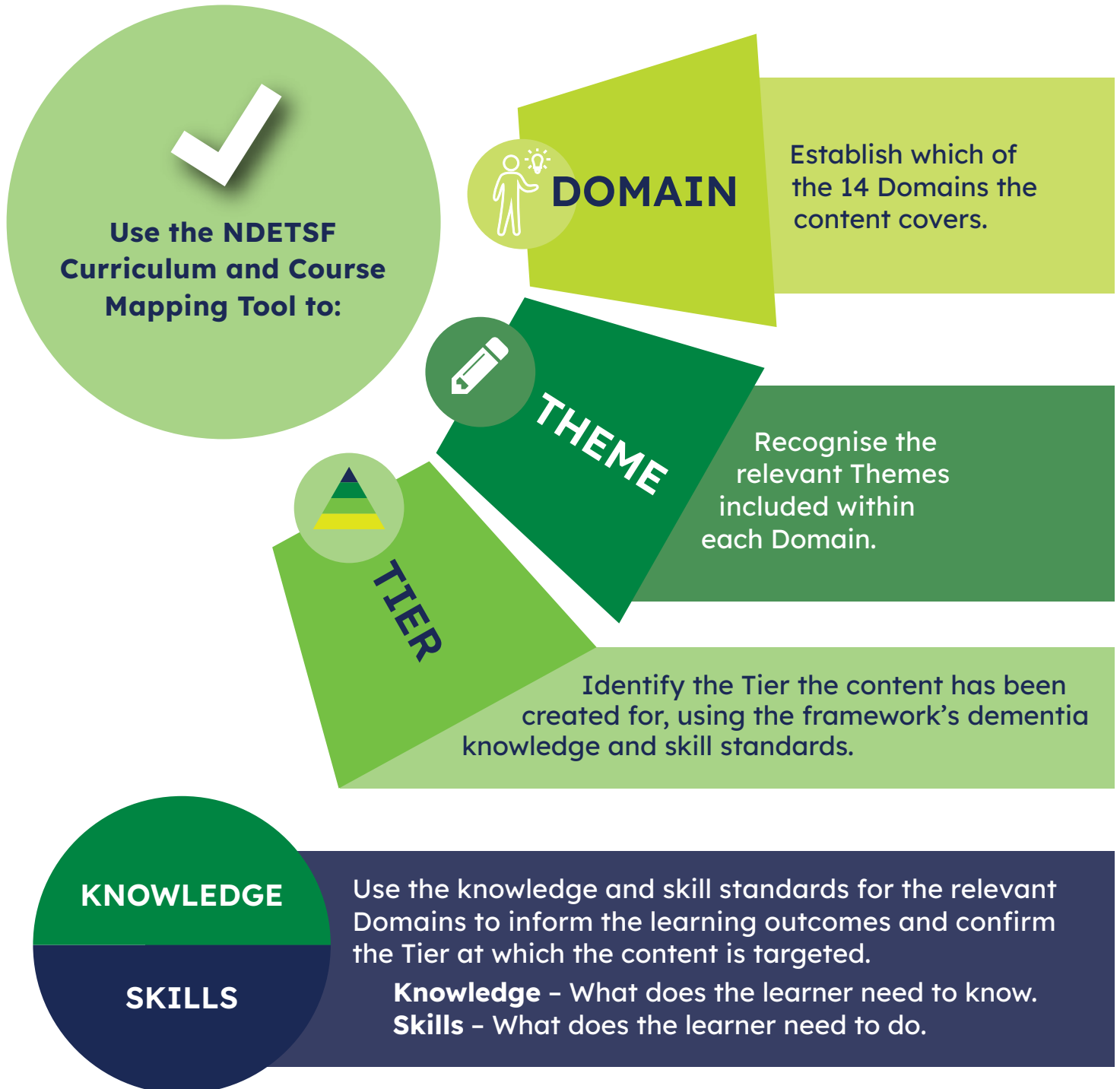


Curriculum and Course Mapping Guide

The National Dementia Education and Training Standards Framework (NDETSF) can be used to review and develop course and workshop content.

Refer to the Framework and use the **NDETSF Curriculum and Course Mapping Tool** to identify the Domains, Themes and Tier that apply to your course content.

For each course or workshop, follow the steps below.



It is recommended that you read the National Dementia Education and Training Standards Framework prior to mapping your course content.

Download the **Framework** here: <https://dta.com.au/ndetsf>

To start mapping your course content find the **Mapping Tool** here: <https://dta.com.au/ndetsf/tools/>